



GRABBER GT

For fast and powerful SUVs and off-road vehicles.



FEATURES AND BENEFITS

Asymmetric pattern with closed and massive shoulder blocks including 3D sipes.

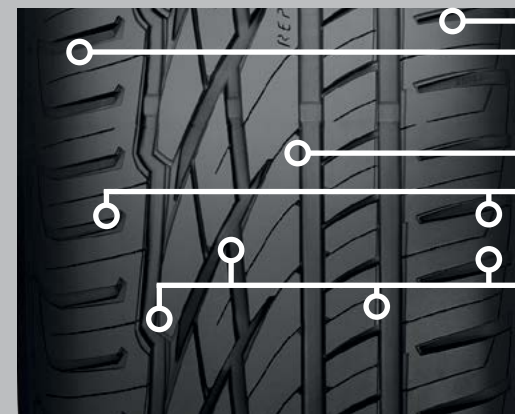
Outstanding handling performance.

Visual Alignment Indicator (VAI) and Replacement Tire Monitor (RTM).

Improved safety and tyre life.

High number of block edges and sipes.

Very high level of safety.



Stiff and well-balanced pattern structure in shoulder blocks

▶ **Outstanding handling performance.**

VAI-Technology: Improved tyre life

RTM-Technology: Improved safety

▶ **Both improve safety and tyre life.**

Multitude of grip edges

▶ **Very high level of safety.**



Visual Alignment Indicator Technology



Replacement Tire Monitor Technology

100%

on-road

0%

off-road